

DESIGNED FOR THE TIPPER GRAB MARKET



HIGH WORKING SPEED



Reach of 8 metres and a radius of 440°.

Dual functions and 2 operating platforms, crossing the platforms via a catwalk.

The large working area the crane provides reduces the need to spend time repositioning and setting up the crane.

Danfoss PVG32 control valve with load-sensing ensures quick and precise control.

...and easy operation

Double slewing system provides slewing torques with full load on slopes up to 15% and precise and smooth control of the crane.

The chain drive has an extension cylinder operating both extensions simultaneously which makes the crane work more efficiently and quickly reducing the time taken carrying out a task.





J.C. BALLS & SONS

NO PROBLEM CONCRETE

HMF CRANES

Safety first

Safety above all. The crane must be safe to operate independently of the operator skills.

The RCL 5300 system is an electronic crane controller for truck-mounted cranes monitoring the conditions of the crane with regard to load moment, operation and function. The RCL 5300 contains a user interface. The operator protection system HSL-Q creates a virtual safety "cage" and prevents the crane from hitting the operator.

Minimum maintenance

Hoses and pipes are hidden in the boom system and thereby protected against wear and tear requiring a minimum of maintenance.

The cranes has additional reinforcement on the main boom and a column in a sturdy design with over-sized strength.

Power Plus link arm system and cylinder have been placed safely on top of the boom system away from the load to avoid downtime due to damage.

Internal cylinder and hose routing on the jib extension system protects against bumps and shocks.

The crane is painted with HMF's environmentally friendly high-quality surface treatment EQC, which ensures an extra durable surface and all together ensures a maximum number of daily lifting tasks, long durability and high residual and resale value.





1310



HMF CRANES

Safe and user-friendly platform and catwalk

The ergonomically designed platform and catwalk surfaces are slip resistant to ensure a safe working area in all weather conditions. Routing the hoses through the main column also ensures the catwalk remains un-obstructed.

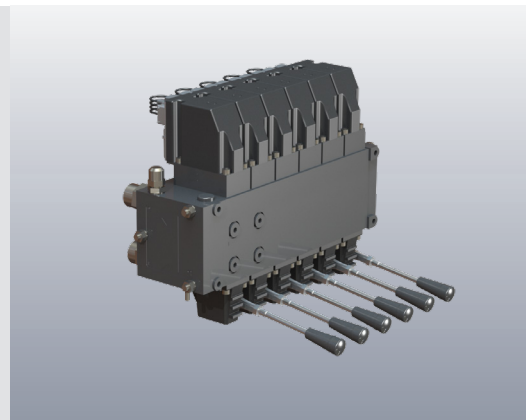
The dual controls are easily accessible from both sides providing the operator with the best working position depending on the task.



Control valve with load-sensing

Danfoss PVG32 control valve provides higher precision and thereby higher working speed.

Is suitable with fixed or variable flow pump to ensure a very high oil flow whilst generating minimum heat and preventing oil leakage.



Internal hose routing

The hoses are protected in the main boom to avoid downtime in case of collision, and reinforcement plates on the main boom ensures a long life time.

Hose dimensions are adapted to a high oil flow that allows for working at high speed whilst generating minimum heat.



Cabin Anti-Crash

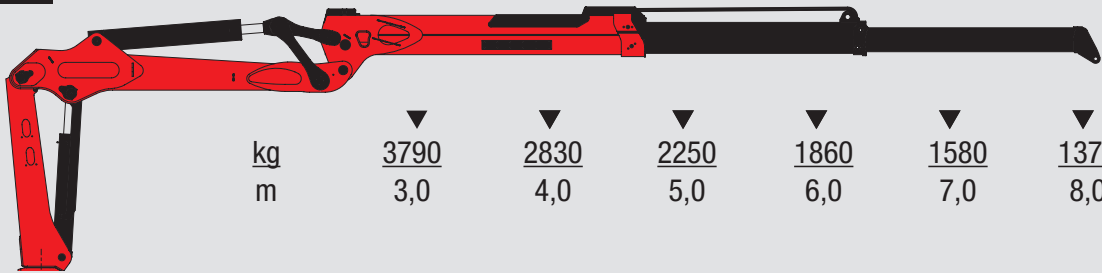
Cabin Anti Crash prevents the crane from colliding with the cab during crane operation. The system detects both the boom position as well as the slewing direction and makes a virtual frame around the cabin preventing all movement that could lead to collision. Cabin Anti-Crash is an option.



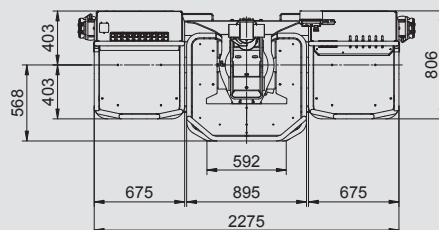
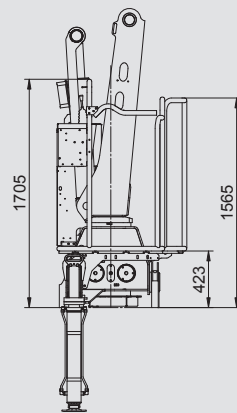
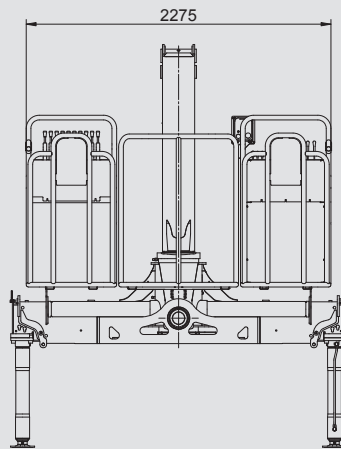
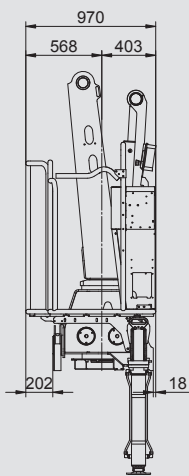
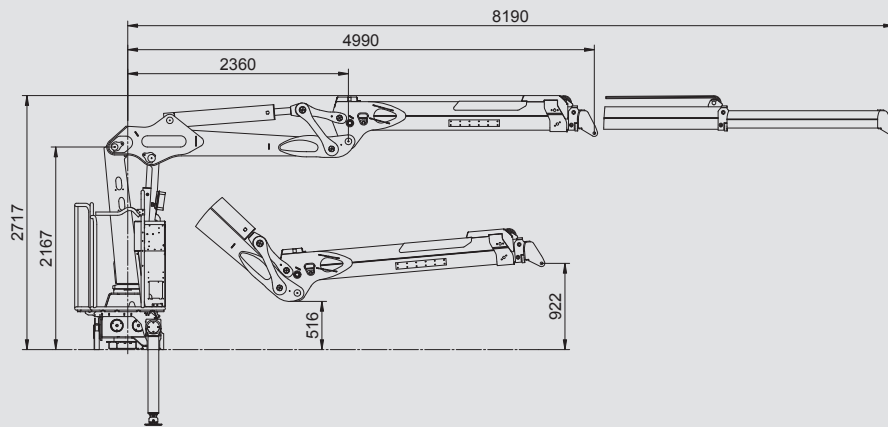


LIFTING CAPACITIES AND MEASUREMENTS

1310R-MC



	▼	▼	▼	▼	▼	▼
kg	<u>3790</u>	<u>2830</u>	<u>2250</u>	<u>1860</u>	<u>1580</u>	<u>1370</u>
m	3,0	4,0	5,0	6,0	7,0	8,0





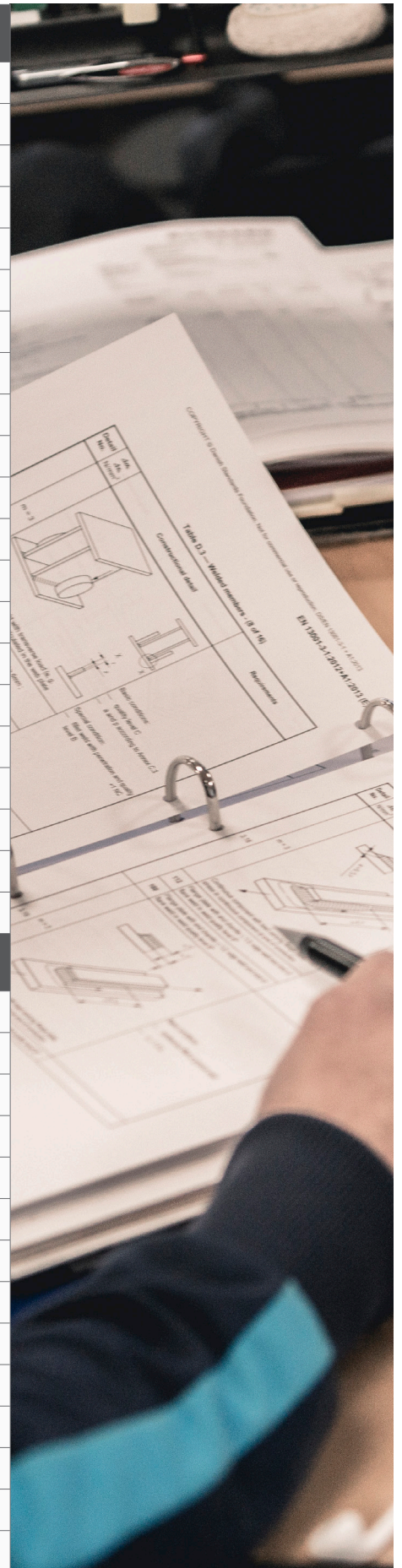
1310

DATA SHEETS **TIPPER GRAB CRANE**



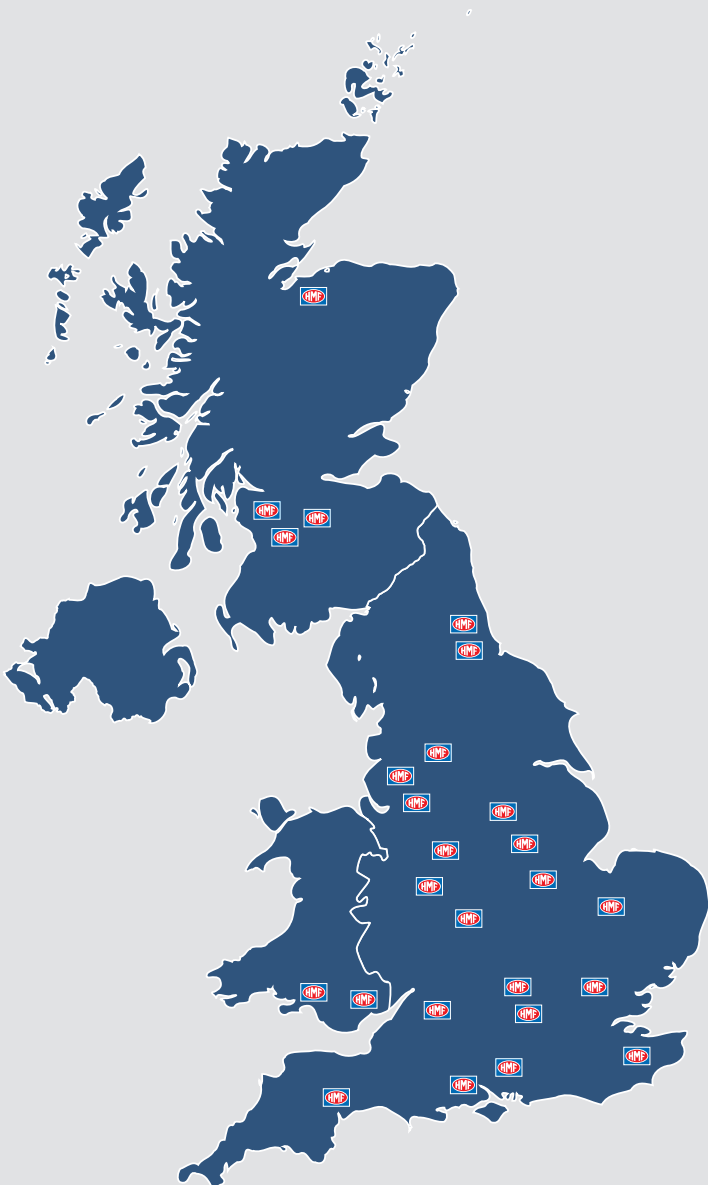
Technical Data HMF 1310R-MC	FIXED LEGS	EXTENDABLE
Load moment	11.2 tm	11.2 tm
Loading class	S3/B4	S3/B4
Hydraulic reach	8.2 m	8.2 m
Slewing torque	2400 kgm	2400 kgm
Slewing radius	440°	440°
Working pressure	290 bar	290 bar
Weight excl. stabilizer legs	2000 kg	2000 kg
Weight of stabilizer Legs, standard	130 kg	210 kg
Pump performance	70-110 l/min	70-110 l/min
Max. heel at max. moment	7°	7°
Power consumption	34-55 kW	34-55 kW
Height above mounting surface	2260 mm	2260 mm
Width folded	2500 mm	2500 mm
Length with 2 platforms + catwalk	970 mm	970 mm
Hook height 1.1 m from column	2.3 m	2.3 m

Features	FIXED LEGS	EXTENDABLE
Control	Manual MC	Manual MC
Platform	Double	Double
Stabilizer type	Fixed vertical	Extendable beams
Stabilizer spread	2300	3500
Stabilizer safety system	CYL	CYL
Swivel foot plate	YES	NO
Extension system - chain	R2	R2
Control valve	Danfoss PVG 32	Danfoss PVG 32
Safety system, crane - CE	RCL5300	RCL5300
Safety system, transport - CE	HEW	BEHEW
Safety system , operator	HSL-Q	HSL-Q
Electric circuit	24 V	24 V
Hydraulic system	Fixed flow pump	Fixed flow pump
Slew centre orientation	6	6
High-pressure filter	YES	YES
Spotlights on jib	YES	YES
Shielding, boom cylinder	YES	YES
Centralised column	YES	YES
Single Power Plus link arm system	YES	YES
Hose routing inside column	YES	YES
Stabilizer safety system 2CYBEL	NO	YES
Options		
Ground control	√	√
Engine control RPM	√	√
Hydraulic stabilizer beam		√
Stabilizer extension 100 or 200 mm	√	√
Hydraulic system: Variable flow pump	√	√
Slew centre orientation 12 o'clock	√	√
Protection kit, boom system	√	√
Cabin Anti-Crash	√	√
Alarm flash on stabilizer cylinders	√	√
Oil cooler	√	√
Biodegradable oil	√	√
Temperature monitoring	√	√
RAL colour	√	√
Mounting bolts 4 - 150 mm	√	√



NATIONWIDE SERVICE

- Our nationwide network of field service engineers delivers excellent service, maintenance and repairs to keep your business moving with minimal disruption.
- We stock a wide selection of spare parts available for next day delivery. Our spare parts team are on hand to assist with any of your parts requirements. If we don't stock it then we can drop ship your parts from our factory in Denmark.
- At HMF we guarantee to stock your crane parts 10 years after the model is discontinued so we can always provide you with what ever you need.



Tel: 01733 558 145



Local service – find your
nearest HMF partner here:

hmfcranes.co.uk